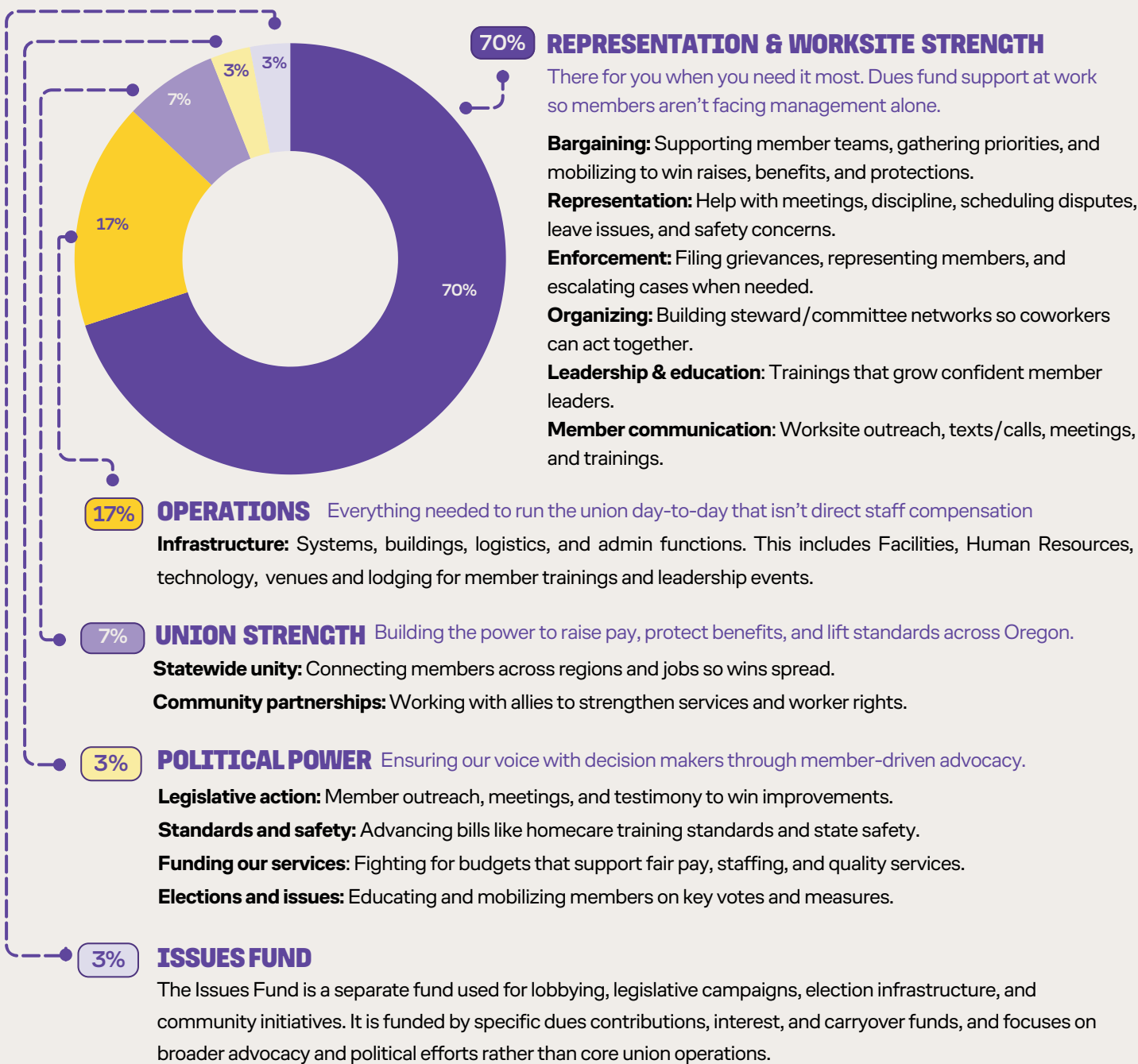




WHERE DO YOUR UNION DUES GO?

For the wages of three hours of work monthly, your union dues are an investment in your future. These resources provide the leverage to demand higher wages, better benefits, and safer conditions. By pooling our strength, we gain the collective power to win—join us and let’s move forward together.



This information is published for SEIU 503 member use only.

CITIZEN ACTION FOR POLITICAL EDUCATION (CAPE)

CAPE is a separate fund built by voluntary member contributions and used for political purposes including working to get our endorsed candidates elected by phonebanking, canvassing, and getting the word out.



FREQUENTLY ASKED QUESTIONS ABOUT OUR BUDGET



WHAT ARE SUBLOCAL REBATES?

These are a portion of member dues returned from the union to the sublocals to pay for local activities, campaigns and worker engagement. They are intended to cover the cost of local, site-based work and get more members involved. SEIU 503 sublocals receive \$1.30 per member for these purposes, such as hosting local gatherings, workshops, training, sublocal swag and travel to union-related events.

HOW MUCH GOES TO PAYROLL VS. OPERATIONS?

“Payroll” is essentially staff compensation (salary, benefits, and allowances). “Operations” is everything needed to run the union day-to-day that isn’t direct staff compensation, and in the 2026 General Fund budget it includes items like Operations, HR, and Facilities (shown as separate expense lines), which together support infrastructure like systems, buildings, and admin functions.

HOW MUCH OF THE BUDGET IS USED TO MAINTAIN FACILITIES?

About three cents of each dues dollar helps maintain our buildings, which include member spaces and resources for union work, meetings, trainings, and organizing events. We currently have offices open full-time on weekdays in Salem and Portland, and offices open by appointment in Medford, Pendleton, and Bend. Our Eugene office is open two days during the week and also by appointment.

HOW MANY FULL-TIME STAFF WORK FOR SEIU 503 ?

SEIU 503 currently has 188 full-time staff, most of whom support members through organizing. The Member Assistance Center is available to take calls and emails from members who need help with information on benefits, contract enforcement, union elections, events, and a variety of other topics. Staff also support communications and member outreach work, membership growth, field support, research, facilities and operations, finance, legal representation and more.

HOW DOES SEIU INVEST IN OUR COMMUNITIES?

Our five-year strategic plan calls for community engagement; our board approved a community mini-grants program to support community initiatives and cross sector activities and events. These initiatives would be led by members and member leaders across Oregon.

HOW MUCH OF MY HOURLY PAY GOES TO UNION DUES?

Union dues are 1.7% per hour worked plus \$2.75 per month. That’s about \$17 or \$18 out of every \$1000 you earn, or about three hours of pay per month.